

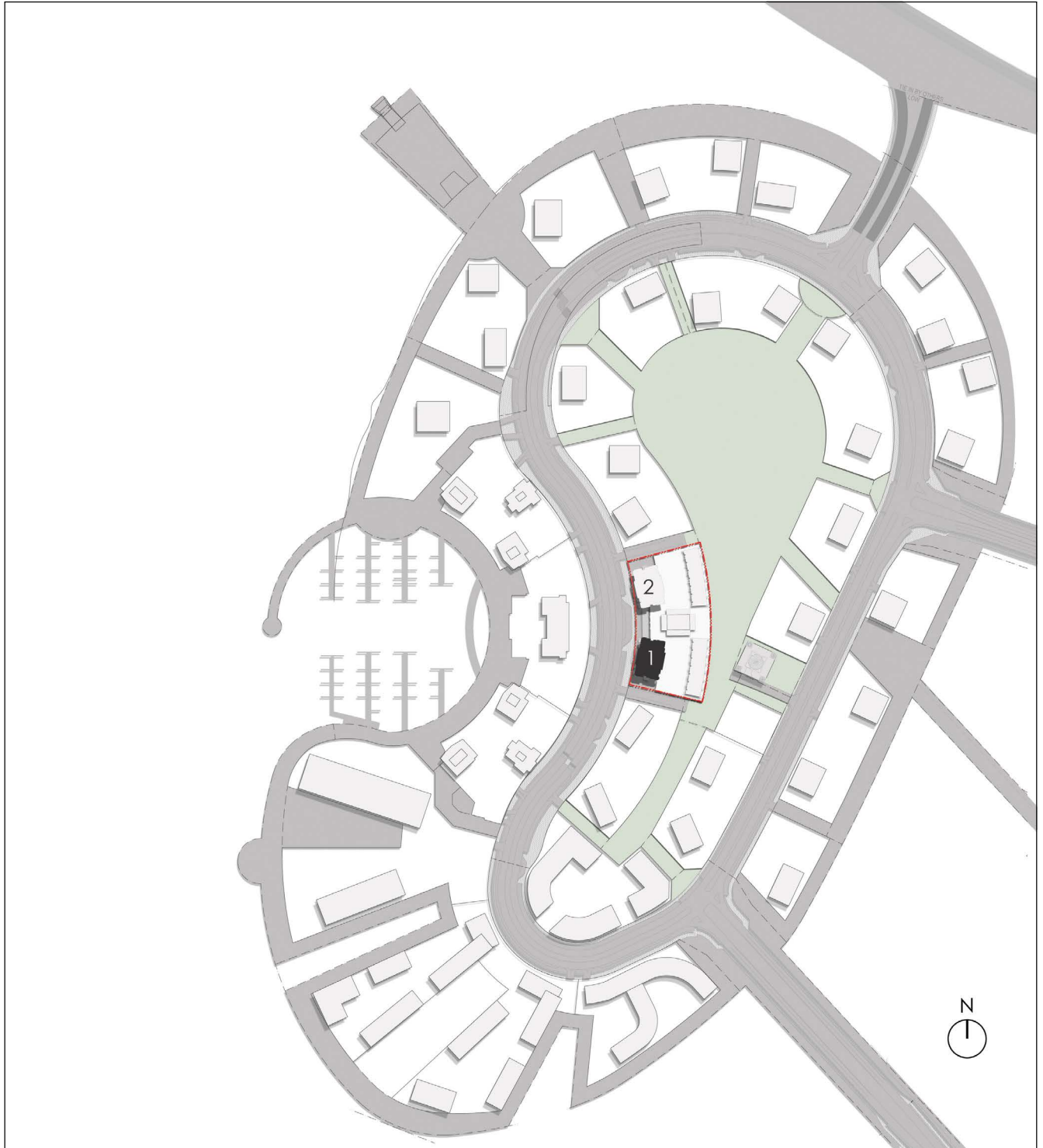
HARBOUR VIEWS

FLOOR PLANS

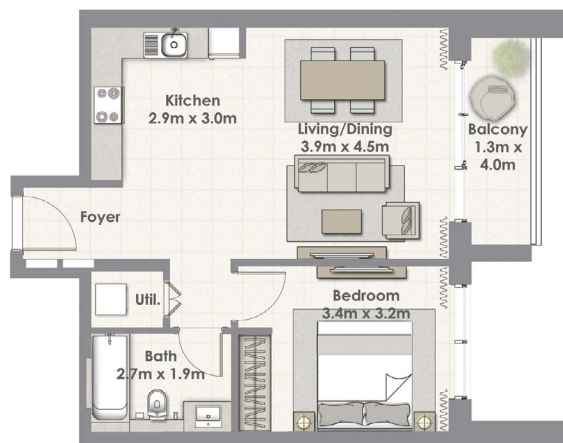
دُبَايْ
DUBAI CREEK HARBOUR



HARBOUR VIEWS THE ISLAND DISTRICT SITE PLAN

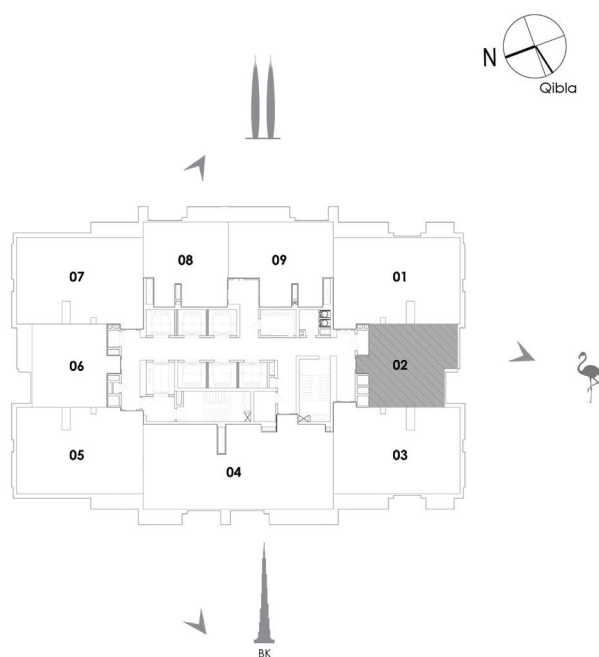
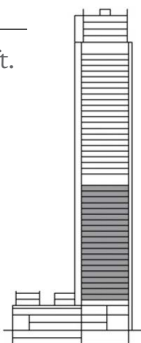
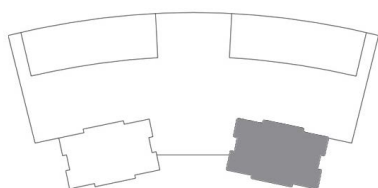


HARBOUR VIEWS 1 BEDROOM-TOWER I



UNIT 02 LEVEL 4-23

Suite Area	59.81 Sq.m. / 644 Sq.ft.
Balcony Area	5.87 Sq.m. / 63 Sq.ft.
Total Area	65.68 Sq.m. / 707 Sq.ft.



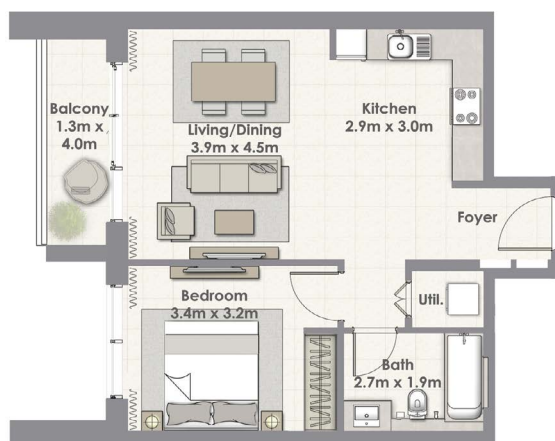
دبي
DUBAI CREEK HARBOUR

1. All materials, dimensions & drawings are approximate. 2. Information is subject to change without notice. 3. Actual suite area may vary from the stated area. 4. Drawings not to scale. 5. The developer reserves the right to make revisions/alterations without any liability whatsoever.

DUBAI
HOLDING

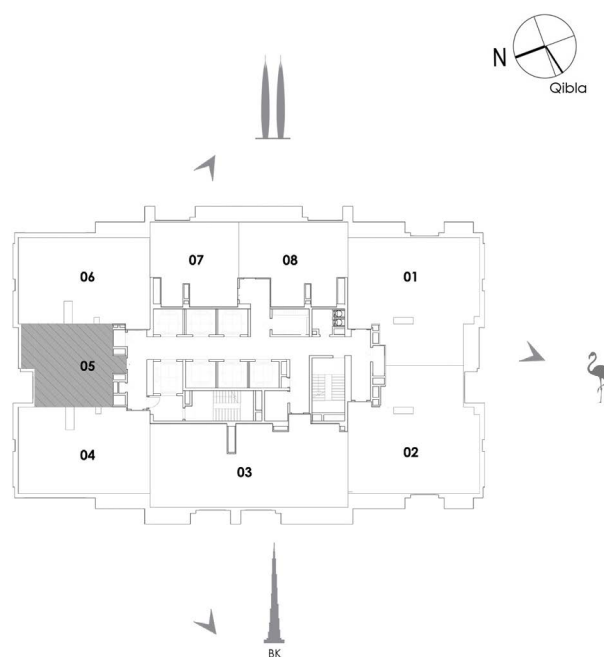
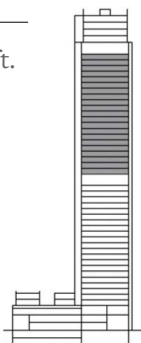
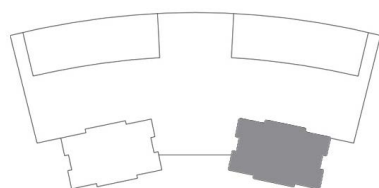


HARBOUR VIEWS 1 BEDROOM - TOWER I



UNIT 05 LEVEL 25 ~ 45

Suite Area	59.81 Sq.m. / 644 Sq.ft.
Balcony Area	5.87 Sq.m. / 63 Sq.ft.
Total Area	65.68 Sq.m. / 707 Sq.ft.



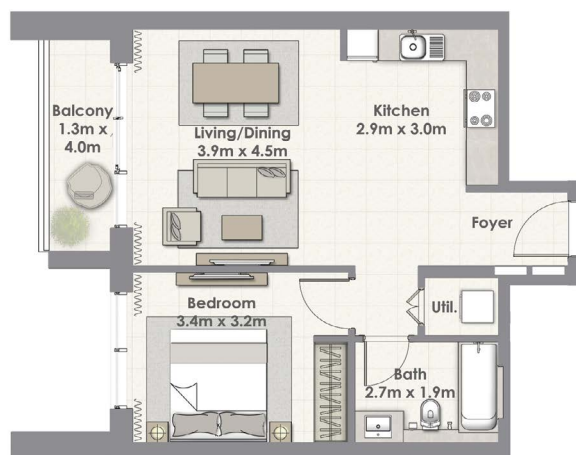
دبي
DUBAI CREEK HARBOUR

DUBAI
HOLDING



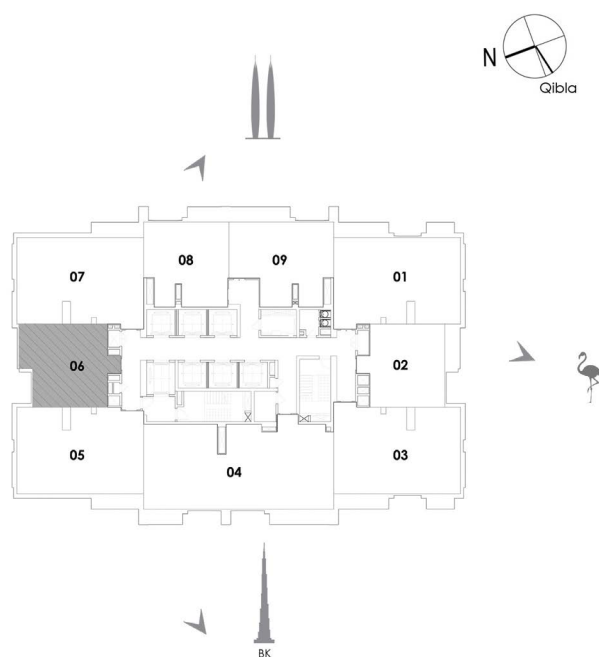
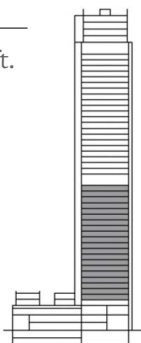
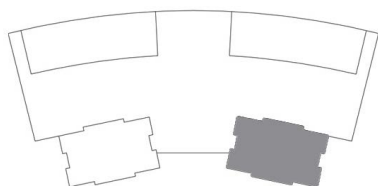
1. All materials, dimensions & drawings are approximate. 2. Information is subject to change without notice. 3. Actual suite area may vary from the stated area. 4. Drawings not to scale. 5. The developer reserves the right to make revisions/alterations without any liability whatsoever.

HARBOUR VIEWS 1 BEDROOM - TOWER I



UNIT 06 LEVEL 4 - 23

Suite Area	59.81 Sq.m. / 644 Sq.ft.
Balcony Area	5.87 Sq.m. / 63 Sq.ft.
Total Area	65.68 Sq.m. / 707 Sq.ft.



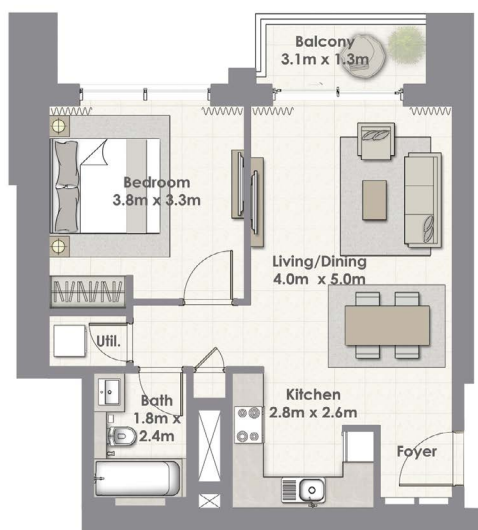
دبي
DUBAI CREEK HARBOUR

DUBAI
HOLDING



1. All materials, dimensions & drawings are approximate. 2. Information is subject to change without notice. 3. Actual suite area may vary from the stated area. 4. Drawings not to scale. 5. The developer reserves the right to make revisions/alterations without any liability whatsoever.

HARBOUR VIEWS 1 BEDROOM - TOWER I

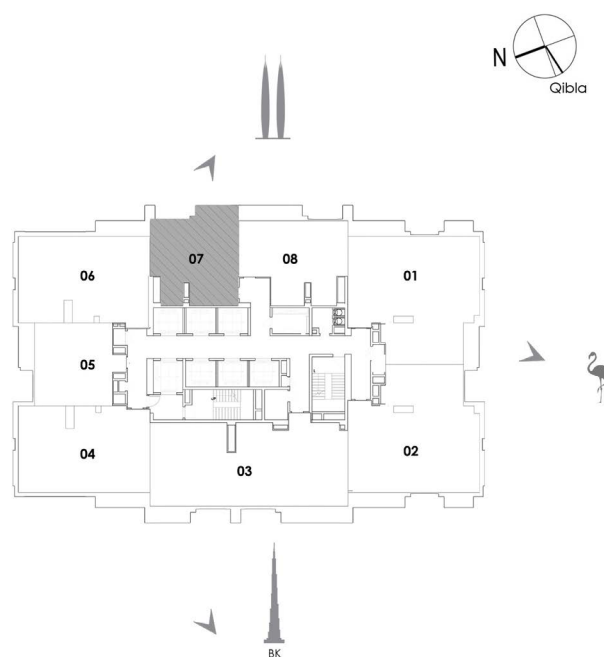
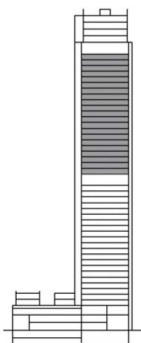
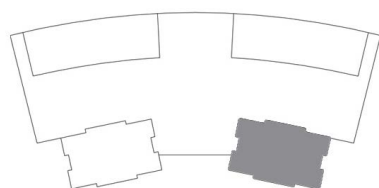


UNIT 07 LEVEL 25-45

Suite Area 62.52 Sq.m. / 673 Sq.ft.

Balcony Area 4.14 Sq.m. / 45 Sq.ft.

Total Area 66.66 Sq.m. / 718 Sq.ft.



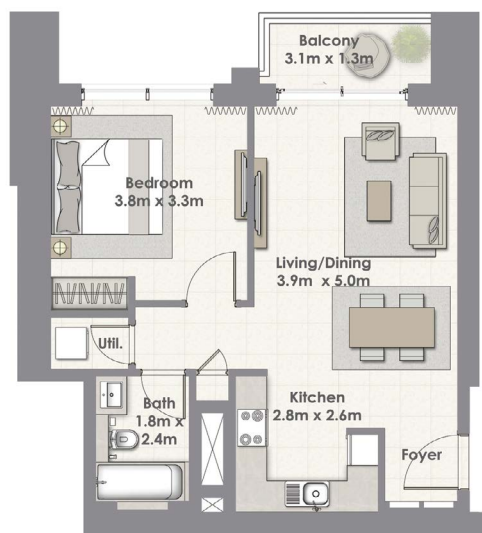
دبي
DUBAI CREEK HARBOUR

DUBAI
HOLDING



1. All materials, dimensions & drawings are approximate. 2. Information is subject to change without notice. 3. Actual suite area may vary from the stated area. 4. Drawings not to scale. 5. The developer reserves the right to make revisions/alterations without any liability whatsoever.

HARBOUR VIEWS 1 BEDROOM - TOWER I

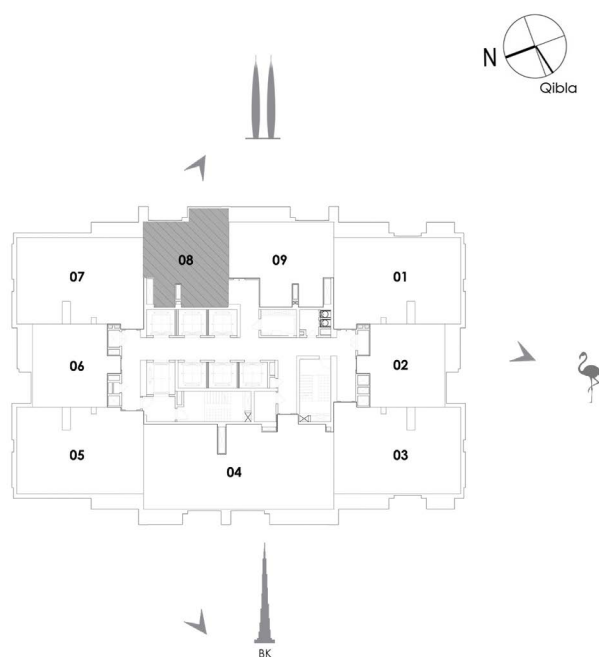
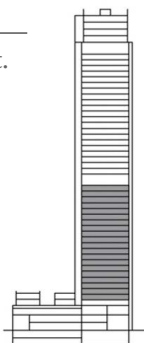
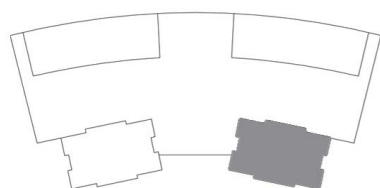


UNIT 08 LEVEL 4 - 23

Suite Area 62.24 Sq.m. / 670 Sq.ft.

Balcony Area 4.14 Sq.m. / 45 Sq.ft.

Total Area 66.38 Sq.m. / 715 Sq.ft.



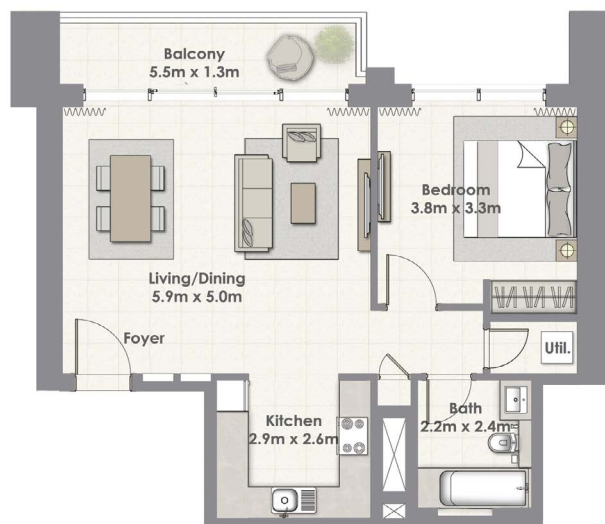
دبي
DUBAI CREEK HARBOUR

DUBAI
HOLDING



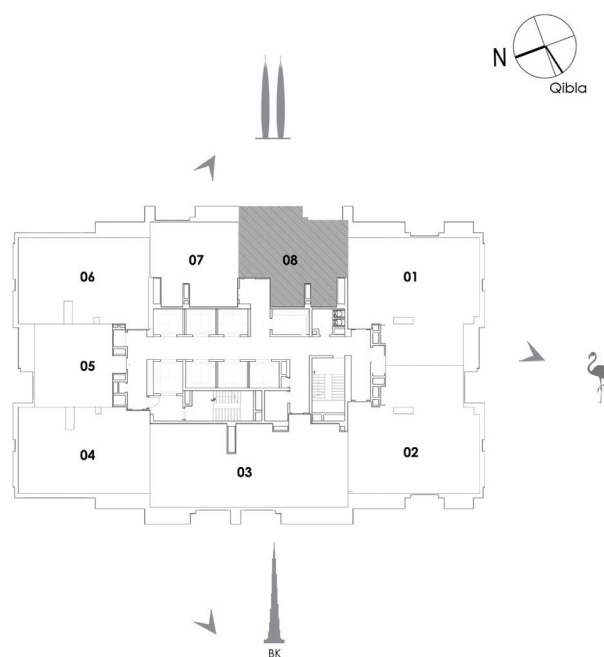
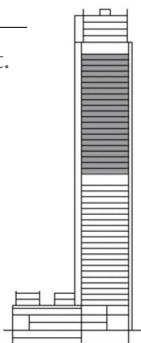
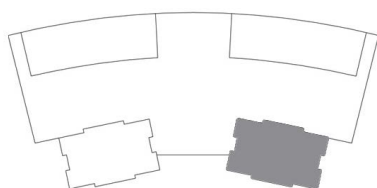
1. All materials, dimensions & drawings are approximate. 2. Information is subject to change without notice. 3. Actual suite area may vary from the stated area. 4. Drawings not to scale. 5. The developer reserves the right to make revisions/alterations without any liability whatsoever.

HARBOUR VIEWS 1 BEDROOM - TOWER I



UNIT 08 LEVEL 25 ~ 45

Suite Area	70.00 Sq.m. / 753 Sq.ft.
Balcony Area	7.40 Sq.m. / 80 Sq.ft.
Total Area	77.40 Sq.m. / 833 Sq.ft.



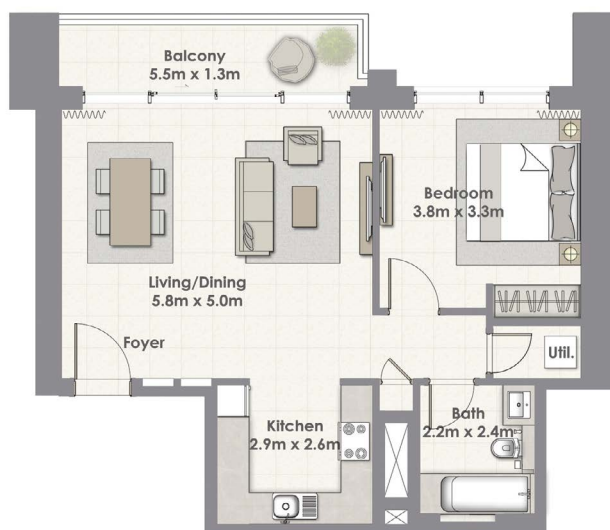
دبي
DUBAI CREEK HARBOUR

DUBAI
HOLDING



1. All materials, dimensions & drawings are approximate. 2. Information is subject to change without notice. 3. Actual suite area may vary from the stated area. 4. Drawings not to scale. 5. The developer reserves the right to make revisions/alterations without any liability whatsoever.

HARBOUR VIEWS I BEDROOM - TOWER I

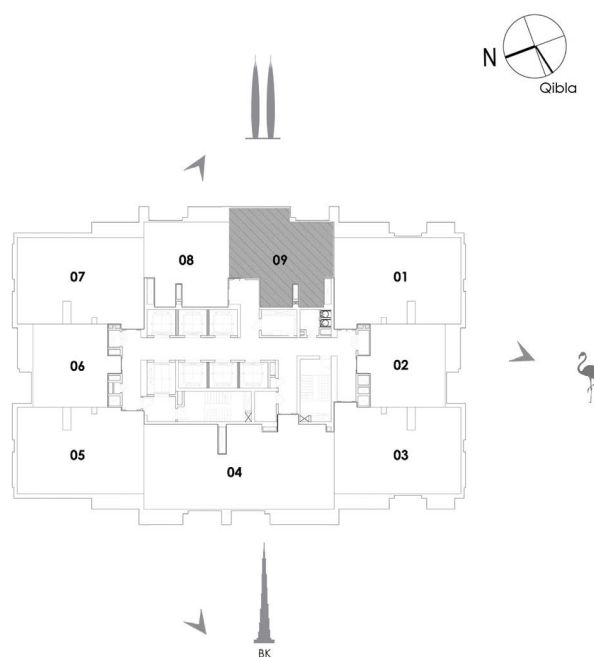
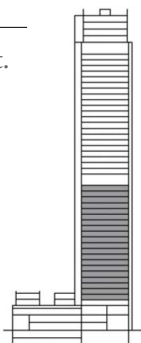
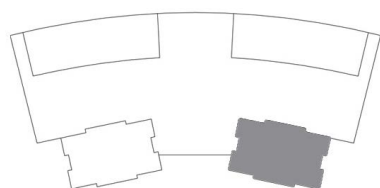


UNIT 09 LEVEL 4 ~ 23

Suite Area 69.88 Sq.m. / 752 Sq.ft.

Balcony Area 7.40 Sq.m. / 80 Sq.ft.

Total Area 77.28 Sq.m. / 832 Sq.ft.



دبي
DUBAI CREEK HARBOUR

DUBAI
HOLDING



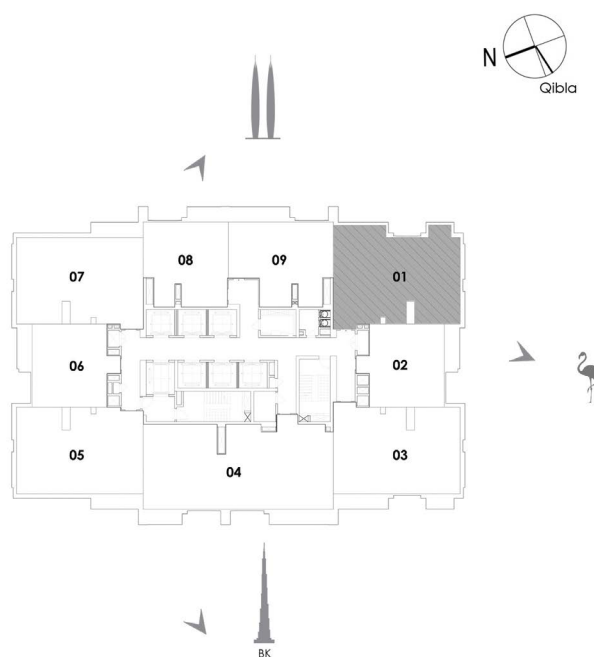
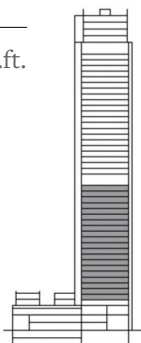
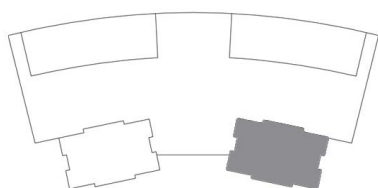
1. All materials, dimensions & drawings are approximate. 2. Information is subject to change without notice. 3. Actual suite area may vary from the stated area. 4. Drawings not to scale. 5. The developer reserves the right to make revisions/alterations without any liability whatsoever.

HARBOUR VIEWS 2 BEDROOM - TOWER I



UNIT 01 LEVEL 4 ~ 23

Suite Area	101.31 Sq.m. / 1090 Sq.ft.
Balcony Area	10.20 Sq.m. / 110 Sq.ft.
Total Area	111.51 Sq.m. / 1200 Sq.ft.



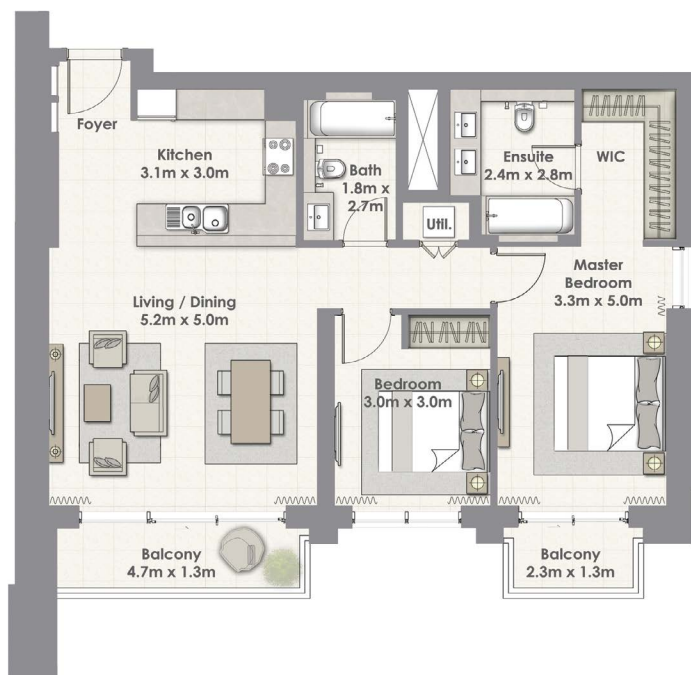
دبي
DUBAI CREEK HARBOUR

DUBAI
HOLDING



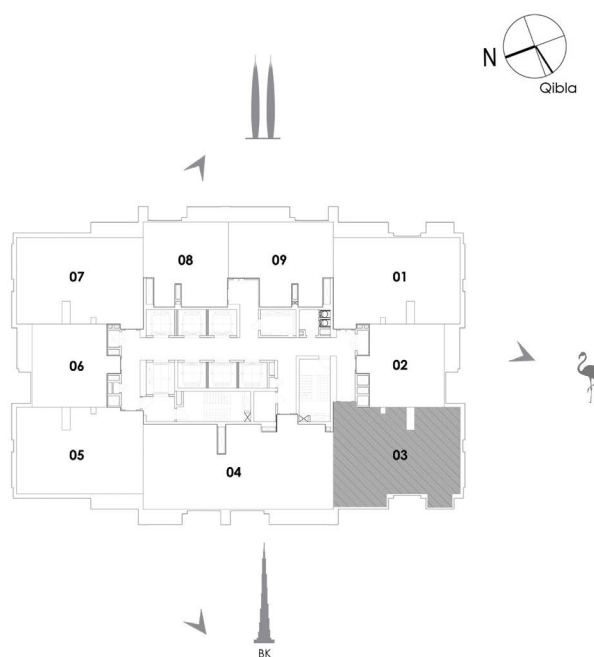
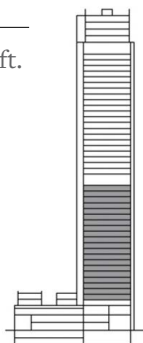
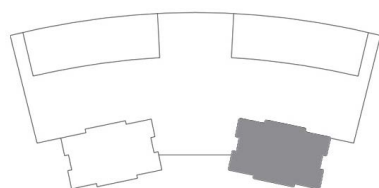
1. All materials, dimensions & drawings are approximate. 2. Information is subject to change without notice. 3. Actual suite area may vary from the stated area. 4. Drawings not to scale. 5. The developer reserves the right to make revisions/alterations without any liability whatsoever.

HARBOUR VIEWS 2 BEDROOM - TOWER I



UNIT 03 LEVEL 4 ~ 23

Suite Area	101.31 Sq.m. / 1090 Sq.ft.
Balcony Area	10.20 Sq.m. / 110 Sq.ft
Total Area	111.51 Sq.m. / 1200 Sq.ft.



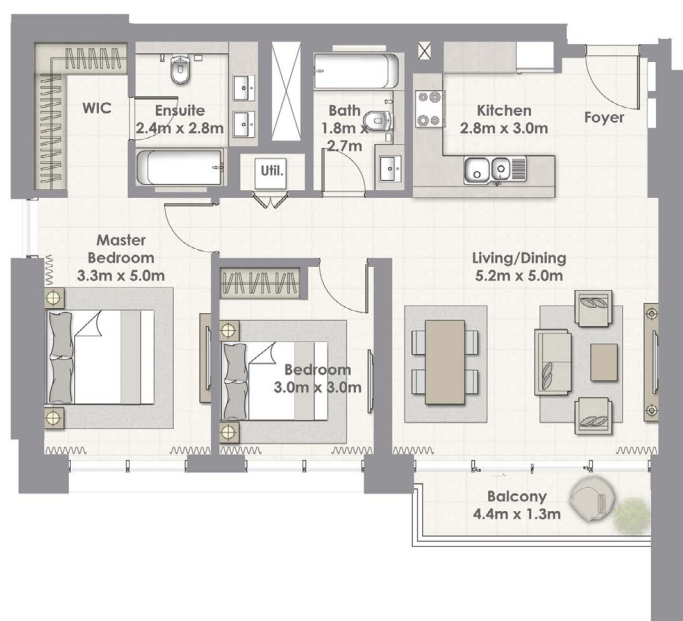
دبي
DUBAI CREEK HARBOUR

DUBAI
HOLDING



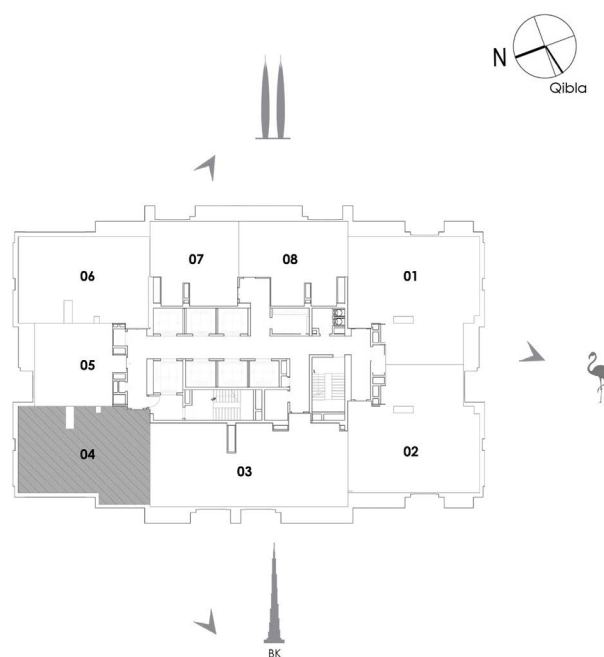
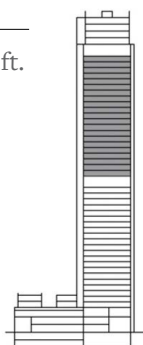
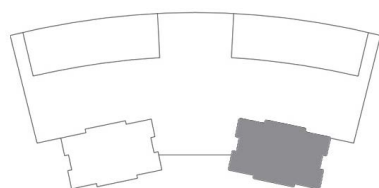
1. All materials, dimensions & drawings are approximate. 2. Information is subject to change without notice. 3. Actual suite area may vary from the stated area. 4. Drawings not to scale. 5. The developer reserves the right to make revisions/alterations without any liability whatsoever.

HARBOUR VIEWS 2 BEDROOM - TOWER I



UNIT 04 LEVEL 25 ~ 45

Suite Area	99.58 Sq.m. / 1072 Sq.ft.
Balcony Area	6.58 Sq.m. / 71 Sq.ft.
Total Area	106.16 Sq.m. / 1143 Sq.ft.



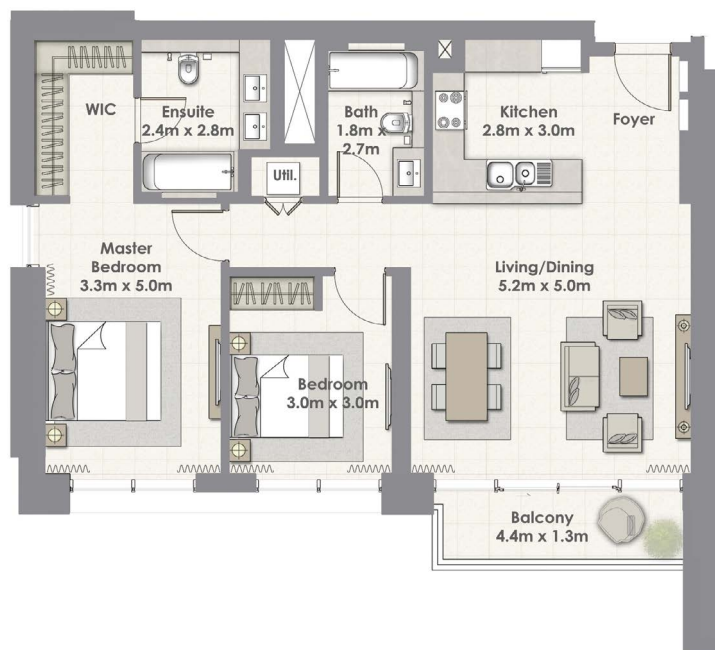
دبي
DUBAI CREEK HARBOUR

DUBAI
HOLDING



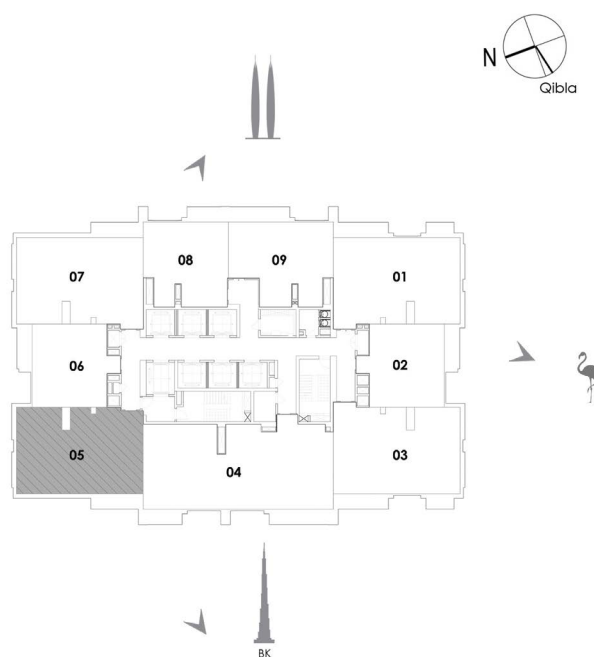
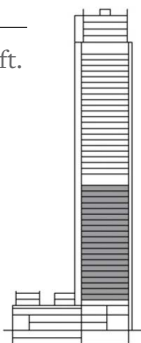
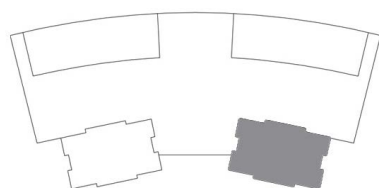
1. All materials, dimensions & drawings are approximate. 2. Information is subject to change without notice. 3. Actual suite area may vary from the stated area. 4. Drawings not to scale. 5. The developer reserves the right to make revisions/alterations without any liability whatsoever.

HARBOUR VIEWS 2 BEDROOM - TOWER I



UNIT 05 LEVEL 4 ~ 23

Suite Area	99.58 Sq.m. / 1072 Sq.ft.
Balcony Area	6.58 Sq.m. / 71 Sq.ft.
Total Area	106.16 Sq.m. / 1143 Sq.ft.



دبي
DUBAI CREEK HARBOUR

DUBAI
HOLDING



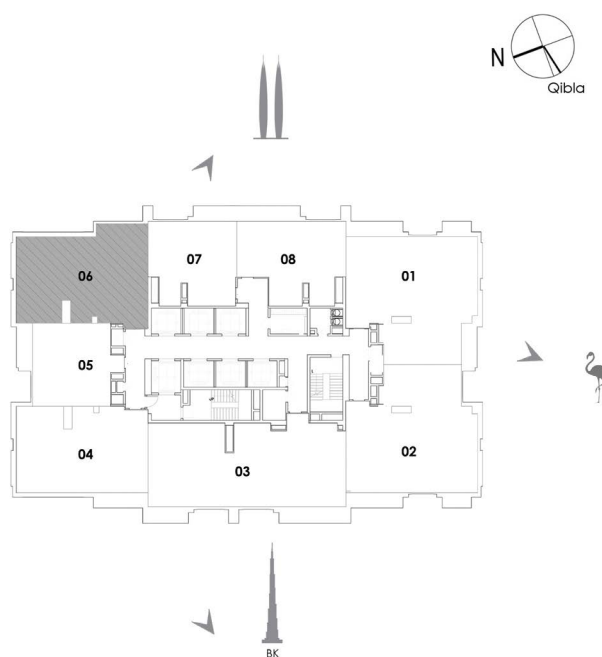
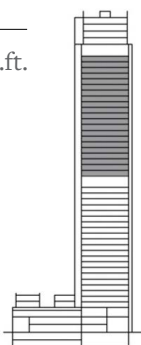
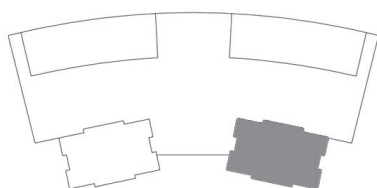
1. All materials, dimensions & drawings are approximate. 2. Information is subject to change without notice. 3. Actual suite area may vary from the stated area. 4. Drawings not to scale. 5. The developer reserves the right to make revisions/alterations without any liability whatsoever.

HARBOUR VIEWS 2 BEDROOM - TOWER I



UNIT 06 LEVEL 25 ~ 45

Suite Area	101.55 Sq.m. / 1093 Sq.ft.
Balcony Area	6.58 Sq.m. / 71 Sq.ft.
Total Area	108.13 Sq.m. / 1164 Sq.ft.



دبي
DUBAI CREEK HARBOUR

DUBAI
HOLDING



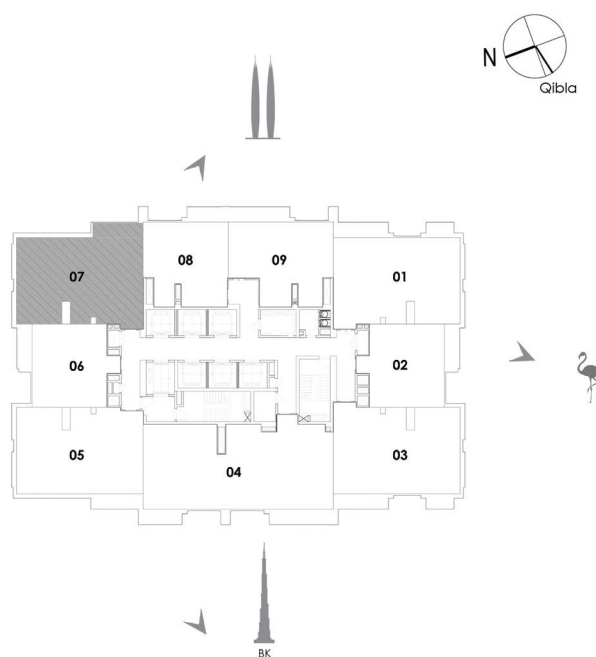
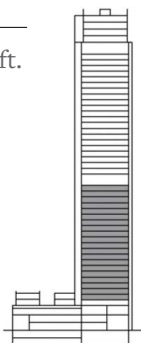
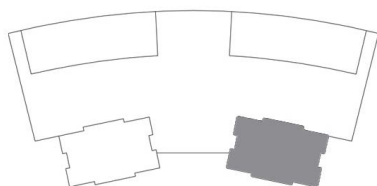
1. All materials, dimensions & drawings are approximate. 2. Information is subject to change without notice. 3. Actual suite area may vary from the stated area. 4. Drawings not to scale. 5. The developer reserves the right to make revisions/alterations without any liability whatsoever.

HARBOUR VIEWS 2 BEDROOM - TOWER I



UNIT 07 LEVEL 4 ~ 23

Suite Area	101.55 Sq.m. / 1093 Sq.ft.
Balcony Area	6.58 Sq.m. / 71 Sq.ft.
Total Area	108.13 Sq.m. / 1164 Sq.ft.



دبي
DUBAI CREEK HARBOUR

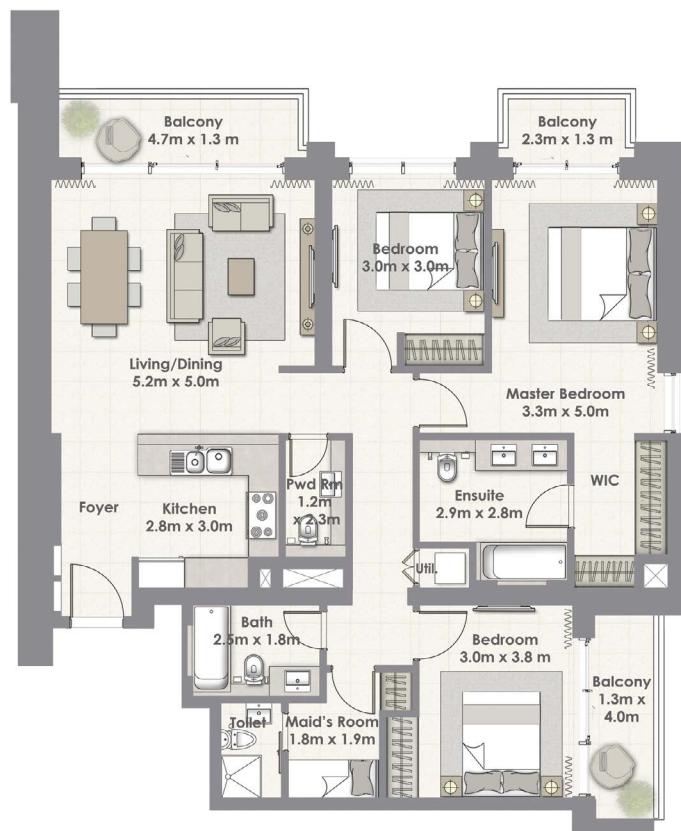
DUBAI
HOLDING



1. All materials, dimensions & drawings are approximate. 2. Information is subject to change without notice. 3. Actual suite area may vary from the stated area. 4. Drawings not to scale. 5. The developer reserves the right to make revisions/alterations without any liability whatsoever.

HARBOUR VIEWS

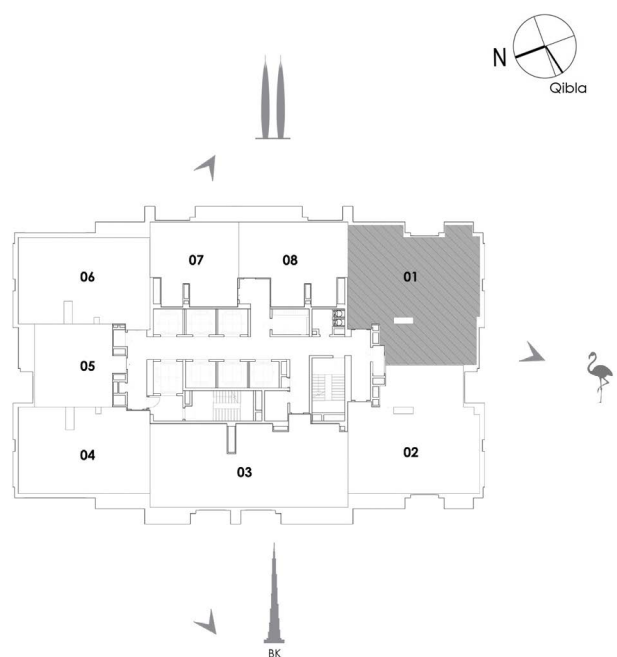
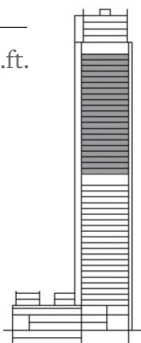
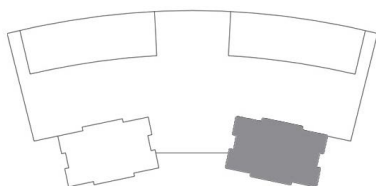
3 BEDROOM ~ TOWER I



UNIT 01

LEVEL 25 ~ 45

Suite Area	131.80 Sq.m. / 1419 Sq.ft.
Balcony Area	16.09 Sq.m. / 173 Sq.ft.
Total Area	147.89 Sq.m. / 1592 Sq.ft.



دبي
DUBAI CREEK HARBOUR

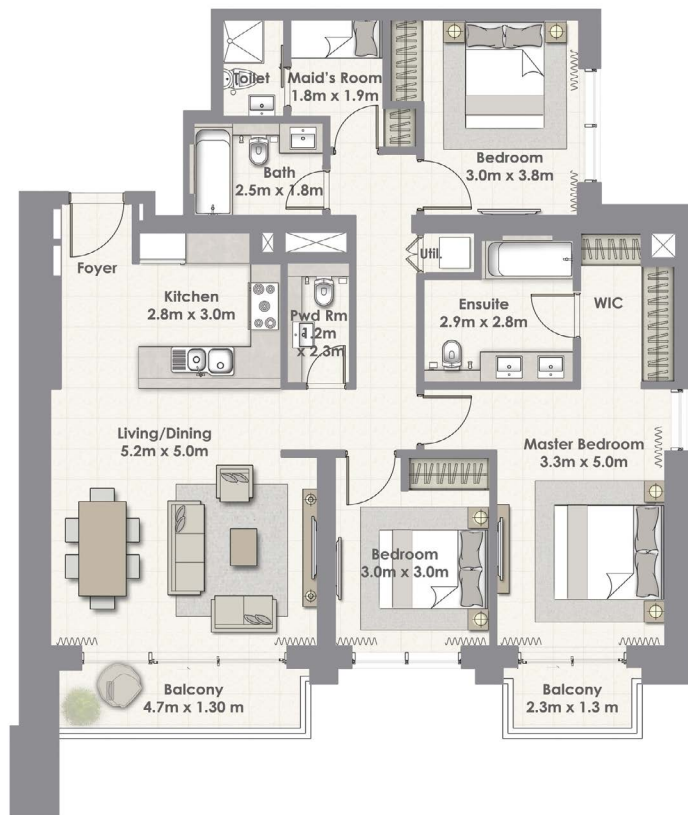
DUBAI
HOLDING



1. All materials, dimensions & drawings are approximate. 2. Information is subject to change without notice. 3. Actual suite area may vary from the stated area. 4. Drawings not to scale. 5. The developer reserves the right to make revisions/alterations without any liability whatsoever.

HARBOUR VIEWS

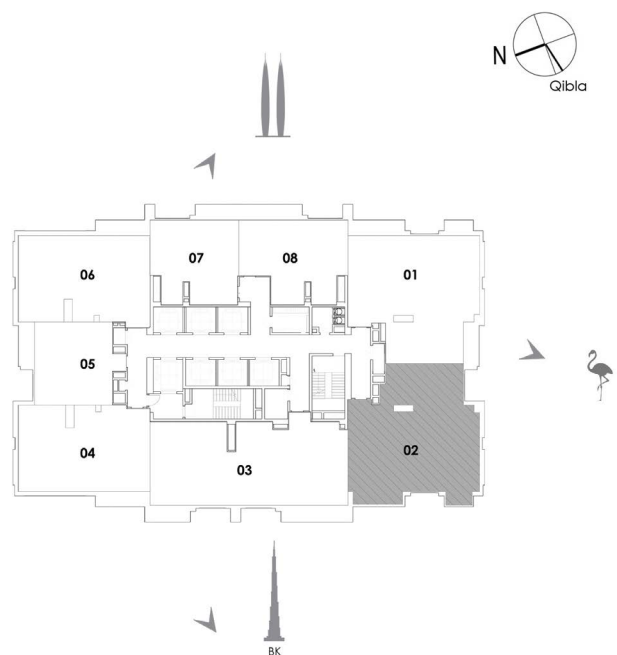
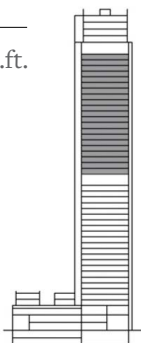
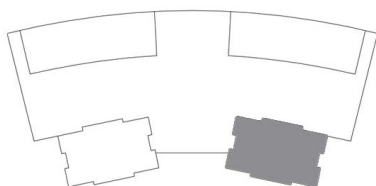
3 BEDROOM - TOWER I



UNIT 02

LEVEL 25 ~ 45

Suite Area	131.59 Sq.m. / 1416 Sq.ft.
Balcony Area	10.20 Sq.m. / 110 Sq.ft.
Total Area	141.79 Sq.m. / 1526 Sq.ft.



دبي
DUBAI CREEK HARBOUR

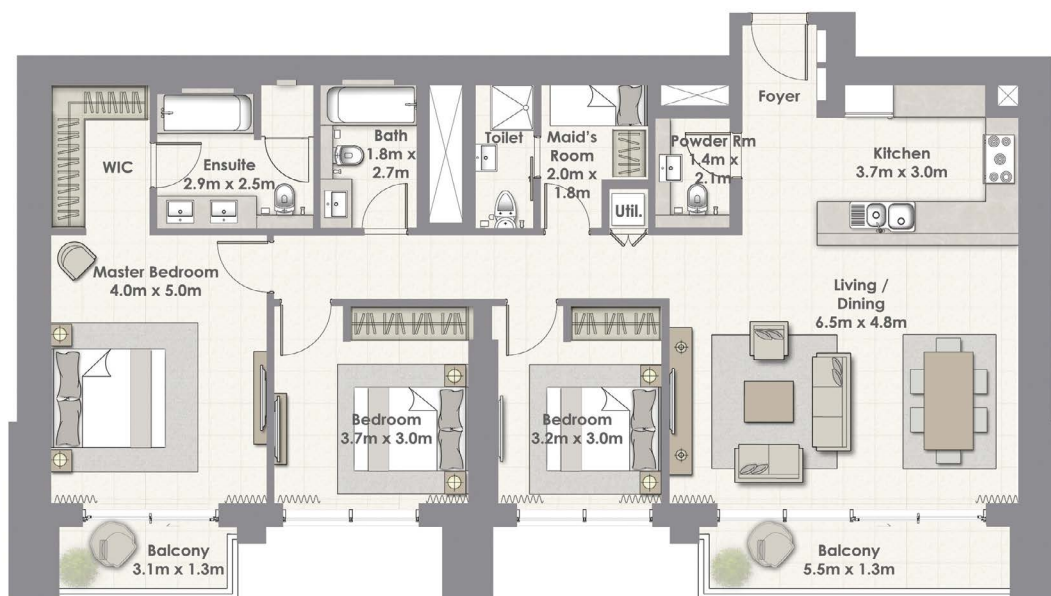
1. All materials, dimensions & drawings are approximate. 2. Information is subject to change without notice. 3. Actual suite area may vary from the stated area. 4. Drawings not to scale. 5. The developer reserves the right to make revisions/alterations without any liability whatsoever.

DUBAI
HOLDING



HARBOUR VIEWS

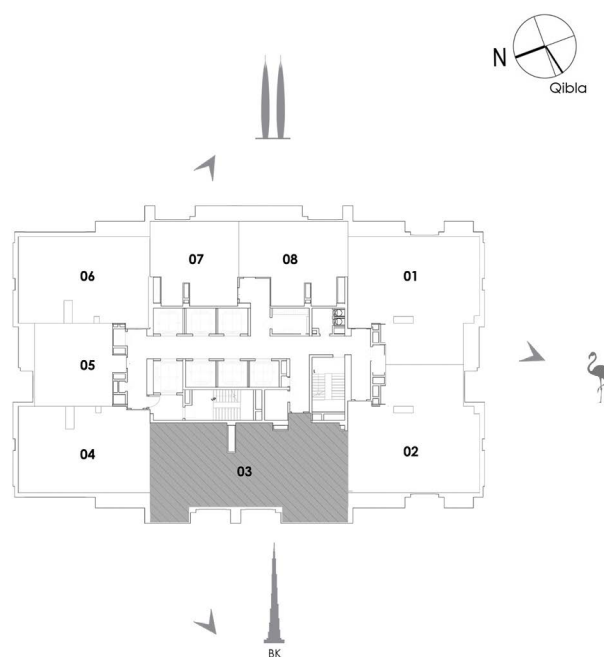
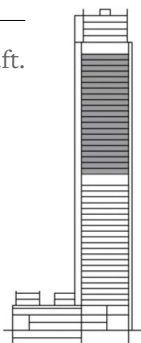
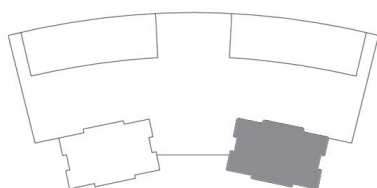
3 BEDROOM - TOWER I



UNIT 03

LEVEL 25 ~ 45

Suite Area	147.98 Sq.m. / 1593 Sq.ft.
Balcony Area	11.58 Sq.m. / 125 Sq.ft.
Total Area	159.56 Sq.m. / 1718 Sq.ft.



دبي
DUBAI CREEK HARBOUR

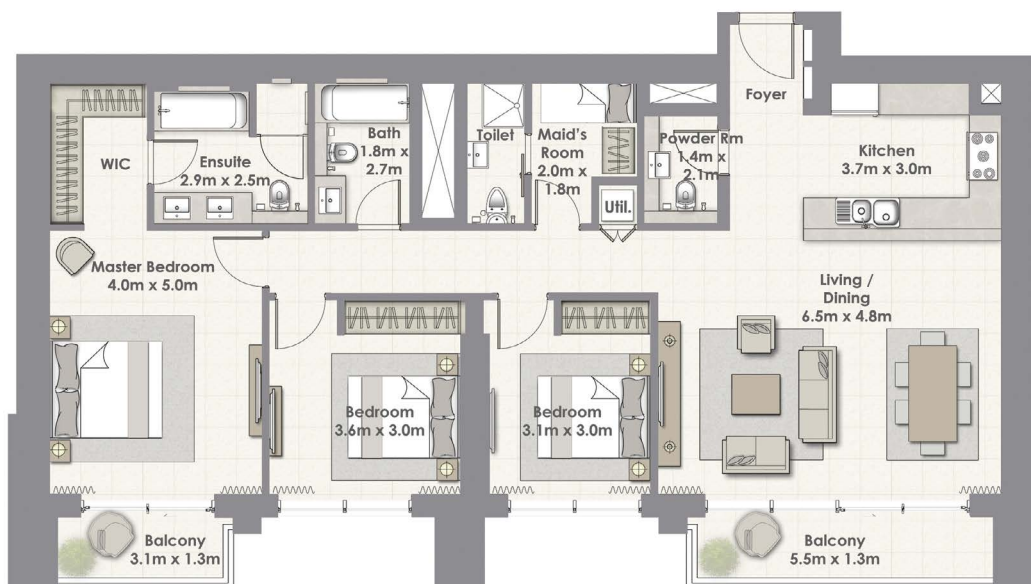
DUBAI
HOLDING



1. All materials, dimensions & drawings are approximate. 2. Information is subject to change without notice. 3. Actual suite area may vary from the stated area. 4. Drawings not to scale. 5. The developer reserves the right to make revisions/alterations without any liability whatsoever.

HARBOUR VIEWS

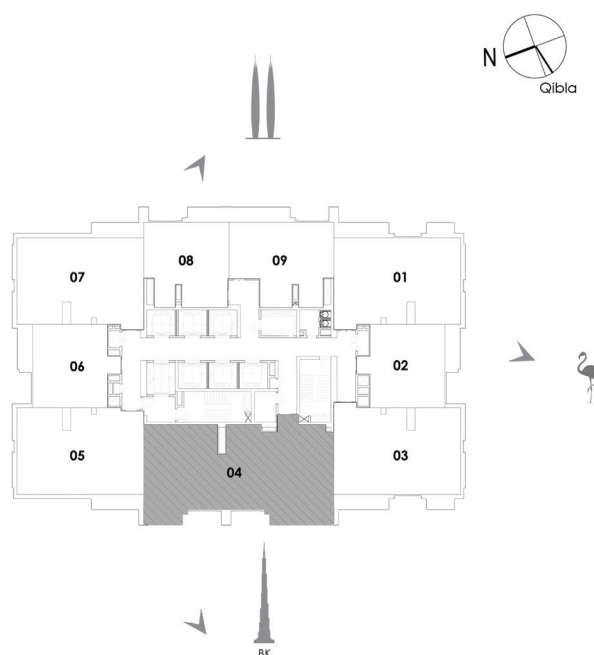
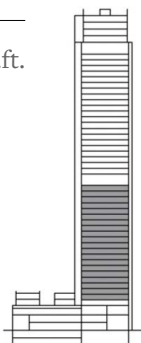
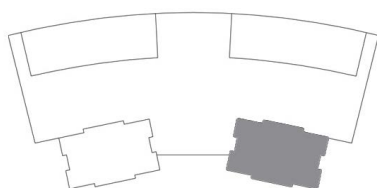
3 BEDROOM - TOWER I



UNIT 04

LEVEL 4 - 23

Suite Area	147.98 Sq.m. / 1593 Sq.ft.
Balcony Area	11.58 Sq.m. / 125 Sq.ft.
Total Area	159.56 Sq.m. / 1718 Sq.ft.



دبي
DUBAI CREEK HARBOUR

DUBAI
HOLDING



1. All materials, dimensions & drawings are approximate. 2. Information is subject to change without notice. 3. Actual suite area may vary from the stated area. 4. Drawings not to scale. 5. The developer reserves the right to make revisions/alterations without any liability whatsoever.