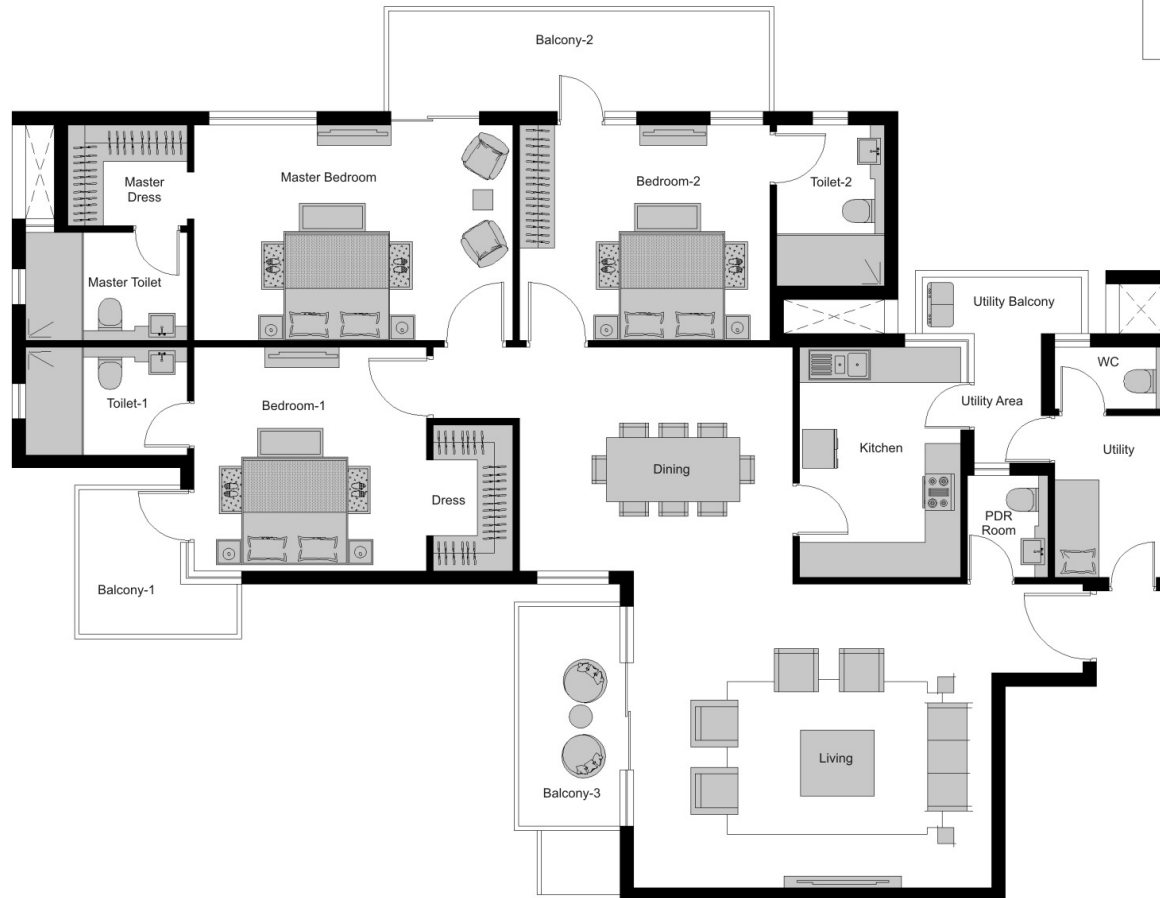
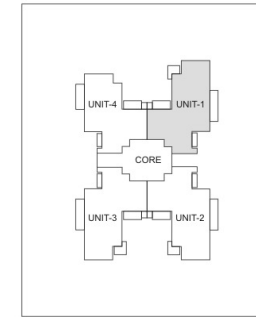


# Waving Teak (3 BHK) Unit Plan

## WT-03, WT-07 (3 BHK + Utility)

4-to-core Sale Area: 2650 (sq. ft.)



	MM	Feet-Inch
Master Bedroom	5420 x 3655	17'-10" x 12'-0"
Bedroom-1	3955 x 3815	13'-0" x 12'-6"
Bedroom-2	4260 x 3655	14'-0" x 12'-0"
Kitchen	2745 x 3930	9'-0" x 12'-11"
Dining	4625 x 3815	15'-3" x 12'-6"
Living	6095 x 5180	20'-0" x 17'-0"
Balcony-1	2840 x 2610	9'-2" x 8'-7"

	MM	Feet-Inch
Balcony-2	6625 x 1800	21'-9" x 5'-11"
Balcony-3	1800 x 3890	5'-11" x 12'-9"
Master Toilet	2745 x 1830	9'-0" x 6'-0"
Toilet-1	2745 x 1830	9'-0" x 6'-0"
Toilet-2	1830 x 2730	6'-0" x 9'-0"
Master Dress	2030 x 1710	6'-8" x 5'-7"
Dress	1350 x 2500	4'-5" x 8'-3"

	MM	Feet-Inch
Utility Balcony	2935 x 1075	9'-8" x 3'-6"
Utility Area	1140 x 2195	3'-9" x 7'-2"
Utility	1840 x 2765	6'-0" x 9'-1"
PDR Room	1370 x 1735	4'-6" x 5'-8"
WC	1840 x 1050	6'-0" x 3'-5"