

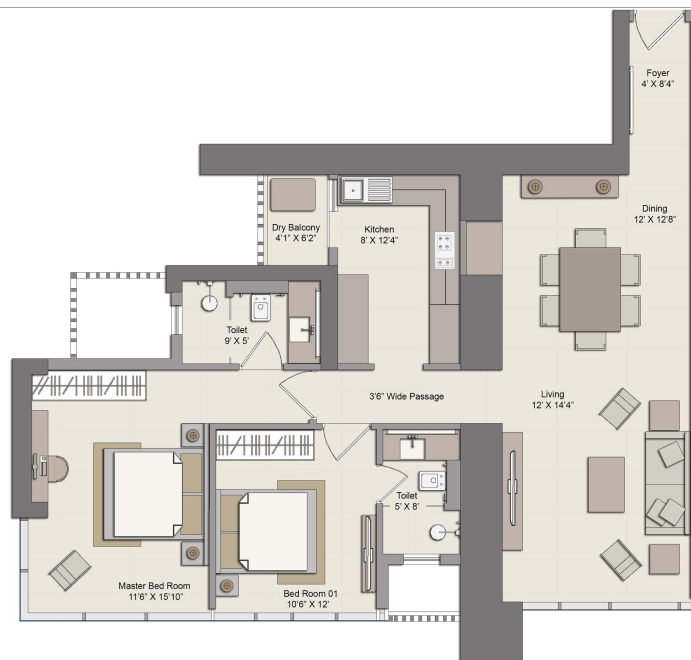
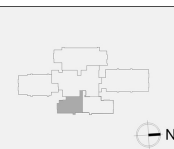
## 2 BEDROOM

UNIT - A 3

### LEVEL

1, 2, 3, 4, 5,  
6, 7, 8, 9, 10

### TOWER LOCATION



CARPET AREA : 961 SQFT.

Disclaimer :- Subject to +/- 5% variation at Piramal realty's sole discretion or as may be required by the competent authorities

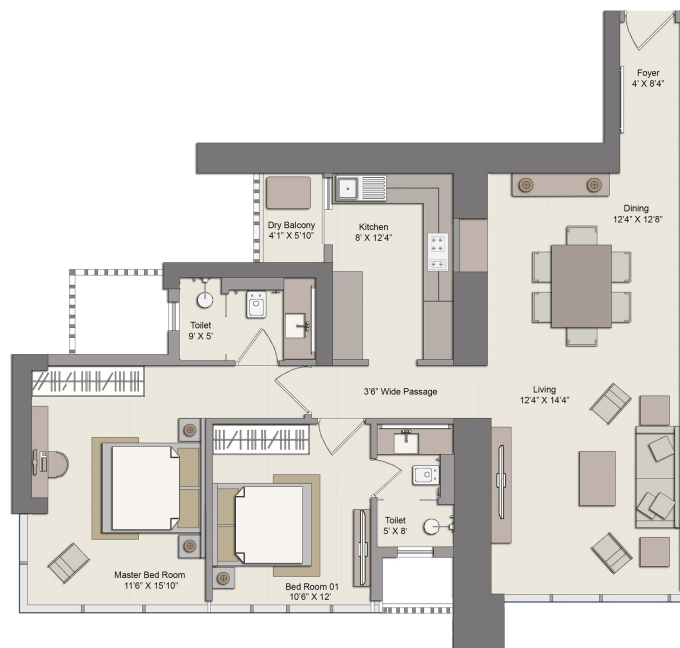
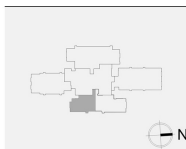
## 2 BEDROOM

UNIT - A 3

### LEVEL

11, 12, 13, 14, 15,  
16, 17, 18, 19, 20,  
21, 22, 23, 24, 25,  
26, 27, 28

### TOWER LOCATION



CARPET AREA : 968 SQFT.

Disclaimer :- Subject to +/- 5% variation at Piramal realty's sole discretion or as may be required by the competent authorities

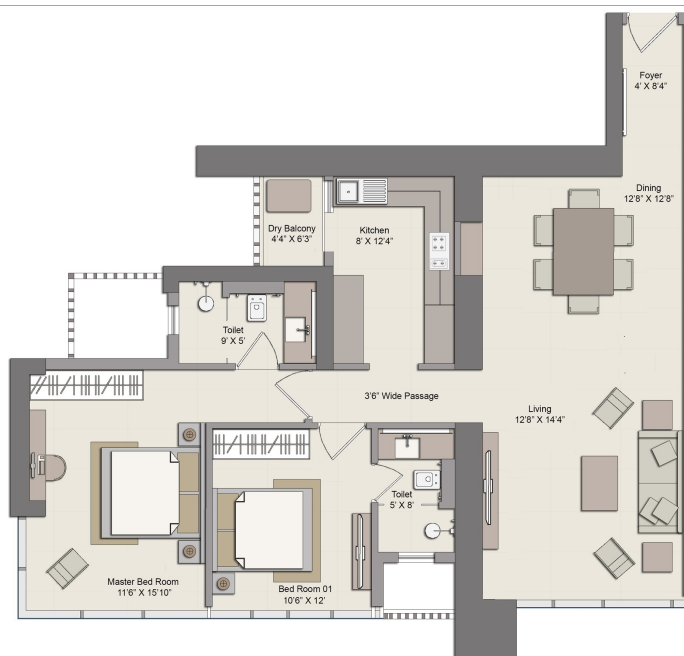
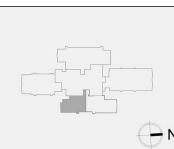
## 2 BEDROOM

UNIT - A 3

### LEVEL

29, 30, 31, 32, 33,  
34, 35, 36, 37, 38,  
39, 40, 41, 42, 43,  
44, 45, 46, 47

### TOWER LOCATION



CARPET AREA : 975 SQFT.

Disclaimer :- Subject to +/- 5% variation at Piramal realty's sole discretion or as may be required by the competent authorities

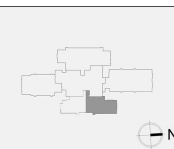
### 3 BEDROOM

UNIT - A 2

#### LEVEL

1, 2, 3, 4, 5,  
6, 7, 8, 9, 10

#### TOWER LOCATION



CARPET AREA : 1258 SQFT.

Disclaimer :- Subject to +/- 5% variation at Piramal realty's sole discretion or as may be required by the competent authorities

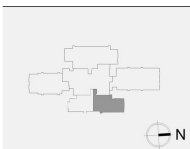
### 3 BEDROOM

UNIT - A 2

#### LEVEL

11, 12, 13, 14, 15,  
16, 17, 18, 19, 20,  
21, 22, 23, 24, 25,  
26, 27, 28

#### TOWER LOCATION



CARPET AREA : 1265 SQFT.

Disclaimer :- Subject to +/- 5% variation at Piramal realty's sole discretion or as may be required by the competent authorities

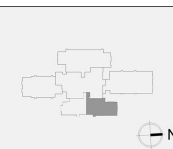
## 3 BEDROOM

UNIT - A 2

### LEVEL

29, 30, 31, 32, 33,  
34, 35, 36, 37, 38,  
39, 40, 41, 42, 43,  
44, 45, 46, 47

### TOWER LOCATION



CARPET AREA : 1272 SQFT.

Disclaimer :- Subject to +/- 5% variation at Piramal realty's sole discretion or as may be required by the competent authorities